



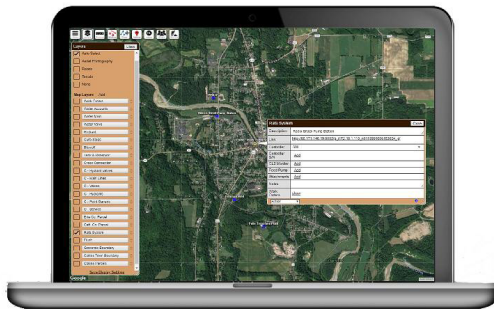
Pennsylvania Rural Water Association has been serving Pennsylvania's water and wastewater industry since 1988. Our staff is comprised of water, wastewater, sourcewater and stormwater specialists. Collectively, we have over 250 years of industry experience.



Diamond Maps

Whether you're looking for a custom map of your assets or an easy database system, PRWA & Diamond Maps is your solution!

Contact Us Today!



PRWA'S MISSION

The mission of the Pennsylvania Rural Water Association is to work cooperatively within the industry to support not only its members but all the water and wastewater utilities throughout the Commonwealth with professional technical support, certified training, legislative representation, and other valuable services and benefits.

For a quote on your municipalities mapping solutions, contact us!

(800) 653-7792



Ben Hill
Founder

Diamond Maps

138 West Bishop Street, Bellefonte, PA 16823
Sales: (317) 939-6941 | Support: (317) 286-6321
Email: customerservice@diamondmaps.com

WWW.PRWA.COM



GIS & Asset Management Made Easy

Serving the water & wastewater industry since 1988



What Is Diamond Maps?

Diamond Maps is a cloud based GIS designed for sewer and water systems to help them keep track of their infrastructure.

Those starting from scratch love how easy it is to plot valve locations and draw pipes on the rich Google imagery backdrop. Existing GIS users move their data to Diamond Maps because they love how their team can all manage pictures and notes. Users can edit the map from any phone, tablet or PC.

Best of all it costs just \$20/month*!

*\$20/month for one user. Unlimited users are determined by each municipality.

On The Go

Access your map anywhere with an internet connection.

Runs in your browser on any phone, tablet or computer.

Nothing to install or back up.

New data entered by any one person is instantly available to all users in your account.

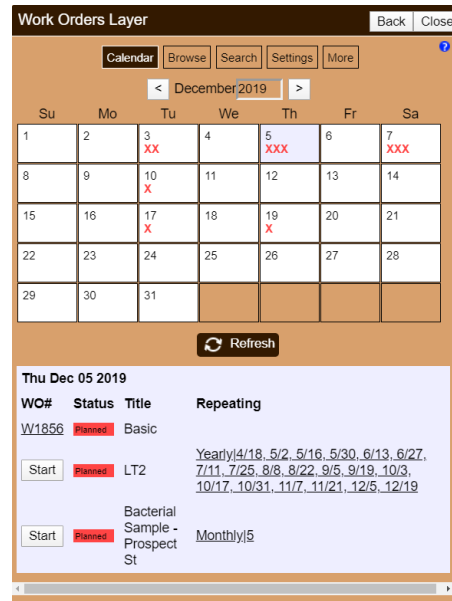
Custom Printed Maps

Diamond Maps also has the ability to print custom maps for your municipality!

- Fungus-Resistant Blockout Banner or Weather Resistant Vinyl
- Tensile Strength of 62.7 x 54.2 lbs.
- Low-Curl Formula
- Designed to withstand down to 4 degrees fahrenheit
- Ink has a life expectancy of 3 years

Work Orders:

- Work orders allow municipalities to organize and maintain repairs, routine tasks and special projects.
- A history is maintained for the ability to export a spreadsheet of all past and current work orders. Orders can be set to reoccurring so they can be completed each day, week, month, or year.
- Employees can receive and complete work orders on mobile phones or tablets.
- Work orders allow you to assign each task to a specific employee.



\$20.00 / Month for One User
Price of Unlimited User Plans Varies
Based on Municipality Population

- **30 Day FREE Trial**
- **10 Year Price Lock**
- **Billed Annually**



All of the Crucial Data for your Team in One Easy-to-Use Web-Based Program

- Draw points, lines and areas.
- Take control of your GIS by giving your staff the ability to add and edit content.
- Send temporary access to your Engineer with the share button.
- Measure distances and areas.
- Mark elevations.
- Calculate latitude & longitude.
- Add photos and documents for reference.
- Add a note to the log every time you flush a hydrant, exercise a valve, inspect a manhole, etc.
- Create or impact layers for any purpose:
 - Parcels
 - Leaks
 - Water/Sewer Lines
 - Water Meters
 - Valves, Curb Stops
 - Manholes
 - Hydrants
 - Virtually any asset in your system



What is the next step for me?

Our website at www.diamondmaps.com is full of videos, descriptions, and FAQ's but we recommend you call for an online demonstration or conference call where we can answer your questions and set you up with a 30 day free trial!